

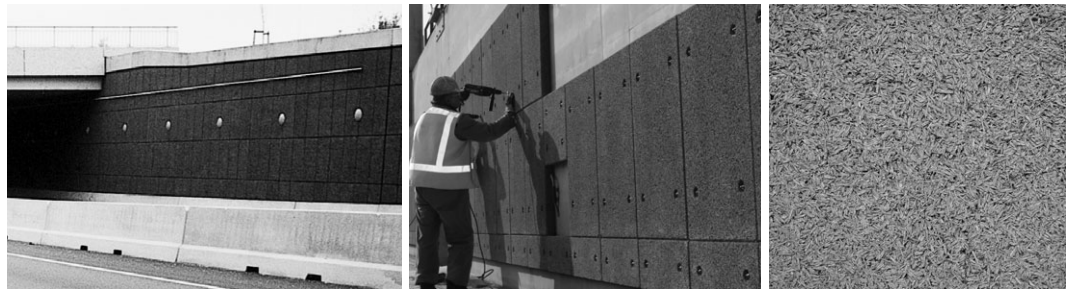
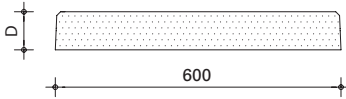
# GT Vlak

## Geluidsabsorptie

Norm	NEN-EN 1793-1		
Categorie	A2		
Wegzijde	DL $\alpha$ 5 dB	DL $\alpha$ 7 dB	DL $\alpha$ 7 dB
Spoorzijde, goederen < 50%	$\Delta L_{A,\alpha}$ Rail 5 dB	$\Delta L_{A,\alpha}$ Rail 8 dB	$\Delta L_{A,\alpha}$ Rail 9 dB
Spoorzijde, goederen > 50%	$\Delta L_{A,\alpha}$ Rail 5 dB	$\Delta L_{A,\alpha}$ Rail 6 dB	$\Delta L_{A,\alpha}$ Rail 8 dB

## Afmetingen\*

Breedte in mm	600	600	600
Lengte in mm	1000	1000	1000
Totale dikte in mm (D)	50	70	100
Gewicht, ca. kg/m <sup>2</sup>	35	50	70



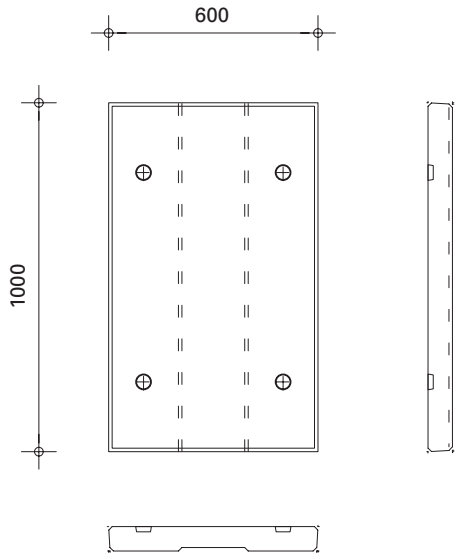
## Weg- of spoorzijde

Materiaal	Houtvezelbeton		
Basisdikte in mm (D)	50	70	100
Profiel	-		
Hoogte in mm	-		
Moduul in mm	-		
Cement	CEM III A 42.5 (grijs) of CEM I 42.5 (wit)		
Pigment	geen of in standaard kleur		
Coating	geen of waterafstotende coating in RAL-kleur na montage		

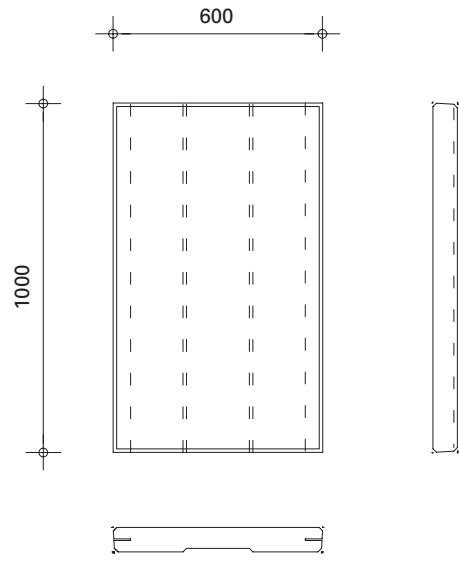
\* andere afmetingen in overleg mogelijk

3'06

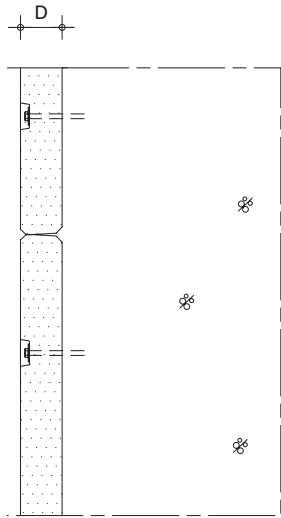
Details: GT Vlak zichtbare bevestiging



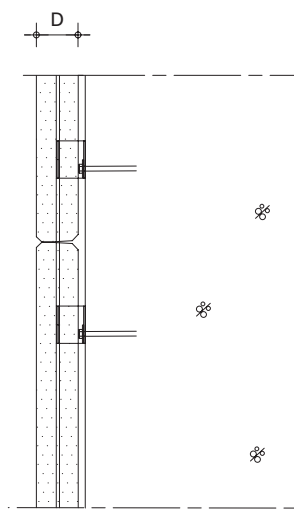
niet zichtbare bevestiging



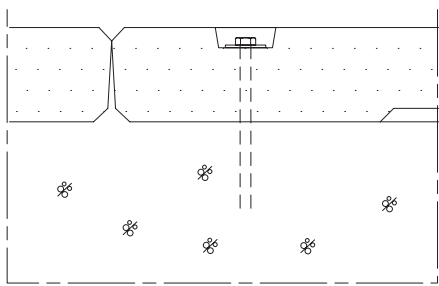
1



1



2



2

